

Proven science. Innovative design.

InterSpace[®]

Knee ATS Spacer



A two-stage exchange with the use of Exactech InterSpace has shown strong eradication rates.¹

19	732	94.1	93.8	55
Peer-reviewed papers at 18 different sites	Cases reported	Percent eradication rate at implant removal	Percent eradication rate at latest follow-up	Months average follow-up

Surgeon focused. Patient driven.[™] **Exactech[®]**

With the same technology and proven science¹, our existing knee spacer now offers an augmented tibial stem (ATS). The stem is complemented by fins, and it is designed to act as a guide to facilitate positioning and reduce the risk of dislocation during application and reduction.

ADVANTAGES

Sizing Flexibility

- 7mm and 12mm thickness options based on patient needs
- Two width options complementing the existing knee spacer to best fit patient anatomy

Unique Design

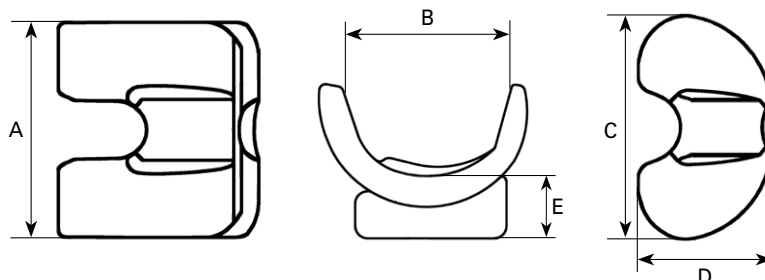
- Augmenting tibial thickness does not sacrifice stem length
- Fins attached to the stem are designed to act as a guide during placement and to reduce the risk of dislocation
- When connected, corrugated surface and notch from ATS and keyhole from tibial component are engineered for increased fixation

Trusted Science

- The most widely studied spacer technology in the world
- Proven high release formulation and design^{2,4}
- Predictable, consistent local antibiotic release over time to prevent bacterial adhesion^{2,3}

References

1. Data on file at Exactech.
2. **Mutimer J, et al.** Measurements of in vivo intra-articular gentamicin levels from antibiotic loaded articulating spacers in revision total knee replacement. *Knee*. 2009 Jan;16(1):39-41.
3. **Bertazzoni Minelli E, et al.** Antimicrobial activity of gentamicin and vancomycin combination in joint fluids after antibiotic-loaded cement spacer implantation in two-stage revision surgery. *J Chemother*. 2015 Feb;27(1):17-24.
4. **Castelli CC, et al.** Two-stage treatment of infected total knee arthroplasty: two to thirteen year experience using an articulating preformed spacer. *Int Orthop*. 2014 Feb;38(2):405-12.

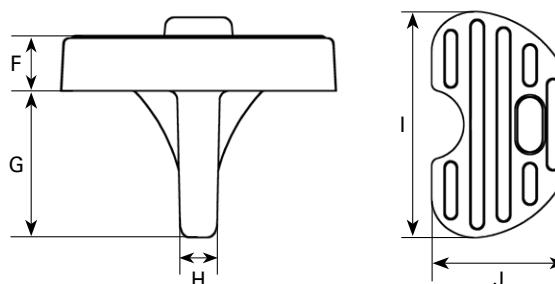


SIZE CHARTS

SIZE	REF	TRIAL SIZE	A (mm)	B (mm)	C (mm)	D (mm)	E (mm)	GENTAMICIN BASE
Small (S)	SPK0022	6054	54	40	60	36	16	0.9g
Medium (M)	SPK0122	7064	64	47	70	42	17	1.3g
Large (L)	SPK0222	8074	74	54	80	48	18	1.8g
Extra Large (XL)	SPK0322	9084	84	61	90	54	19	2.7g

Trials

- SPK90Z1 InterSpace Knee Trials (S, M, L)
 SPK03Z1 InterSpace Knee Trials (XL)



SIZE	REF	INTERSPACE KNEE PAIRING	F (mm)	G (mm)	H (mm)	I (mm)	J (mm)	GENTAMICIN BASE
InterSpace ATS (60/07)	SPK0422	S or M	7	32	11	60	36	0.3g
InterSpace ATS (60/12)	SPK0522	S or M	12	32	11	60	36	0.5g
InterSpace ATS (80/07)	SPK0622	L or XL	7	40	11	80	48	0.5g
InterSpace ATS (80/12)	SPK0722	L or XL	12	40	11	80	48	0.8g

Trials

- SPK90Z2 InterSpace ATS Trials (All Sizes)

Colors indicate ATS pairings

InterSpace® is produced by Tecres® S.p.A., Italy, and is distributed only in the USA by Exactech, Inc.

Exactech, Inc. is proud to have offices and distributors around the globe. For more information about Exactech products available in your country, please visit www.exac.com.